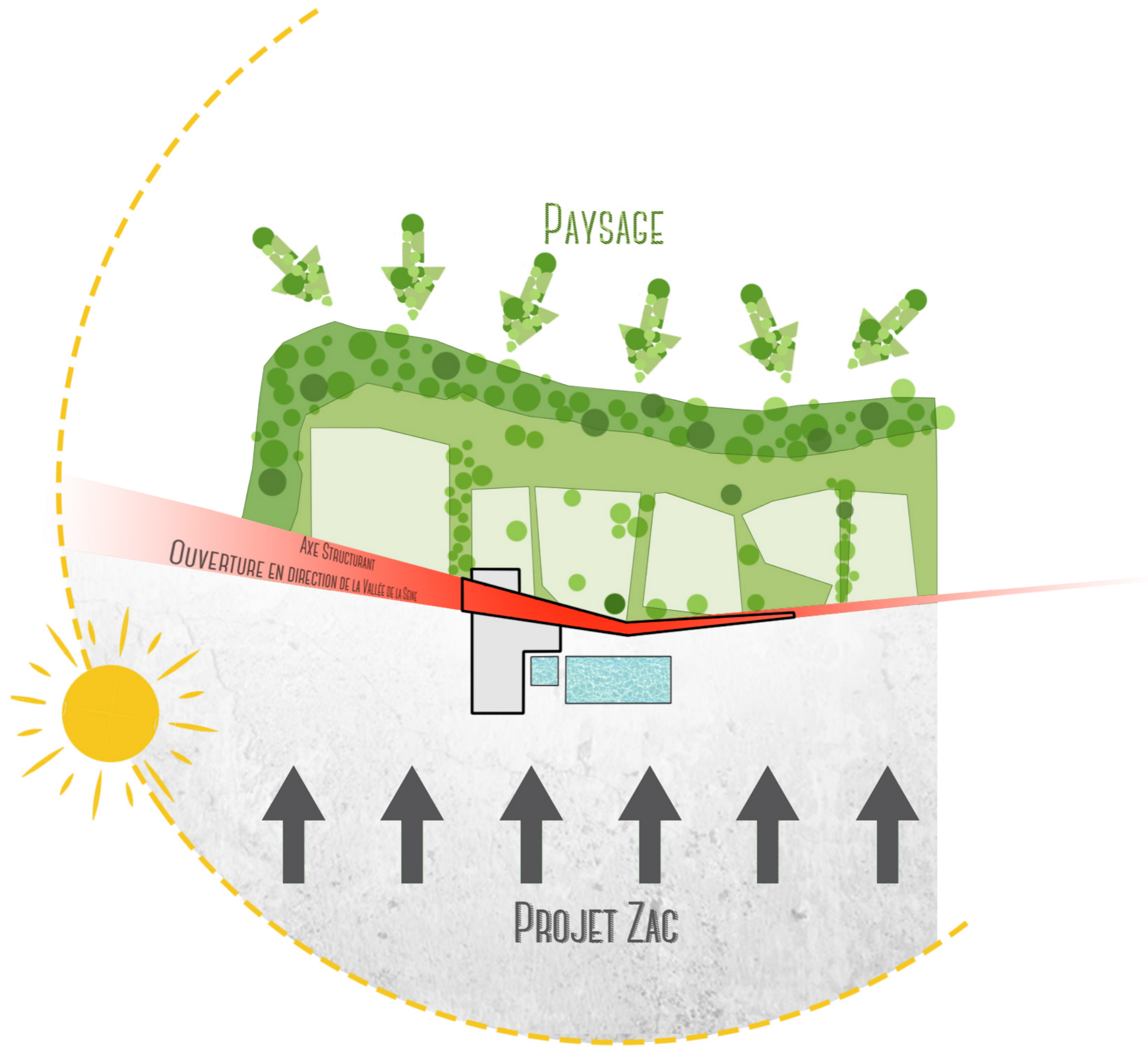


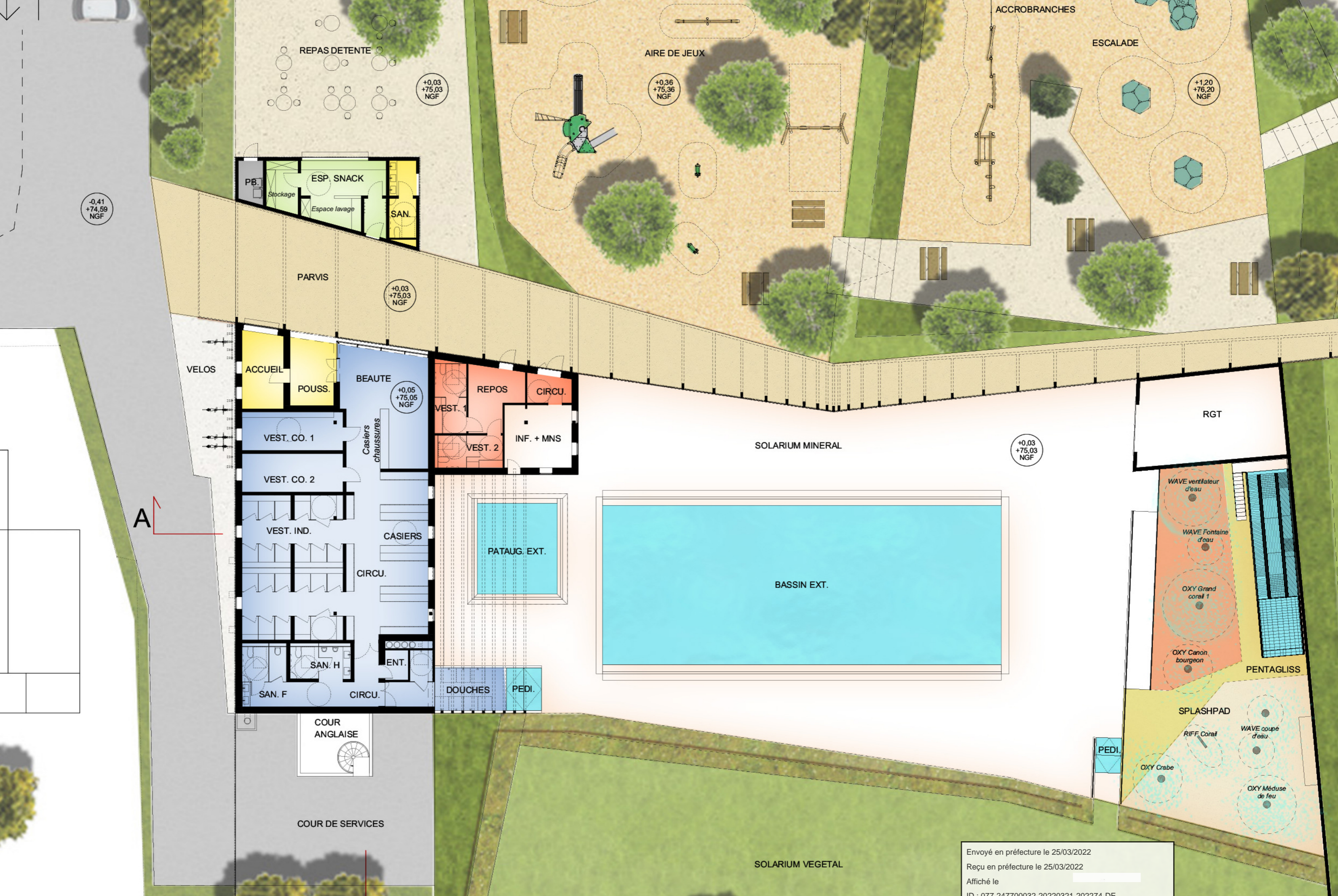
CARNET A3

REHABILITATION DU SITE DES COLINETTES

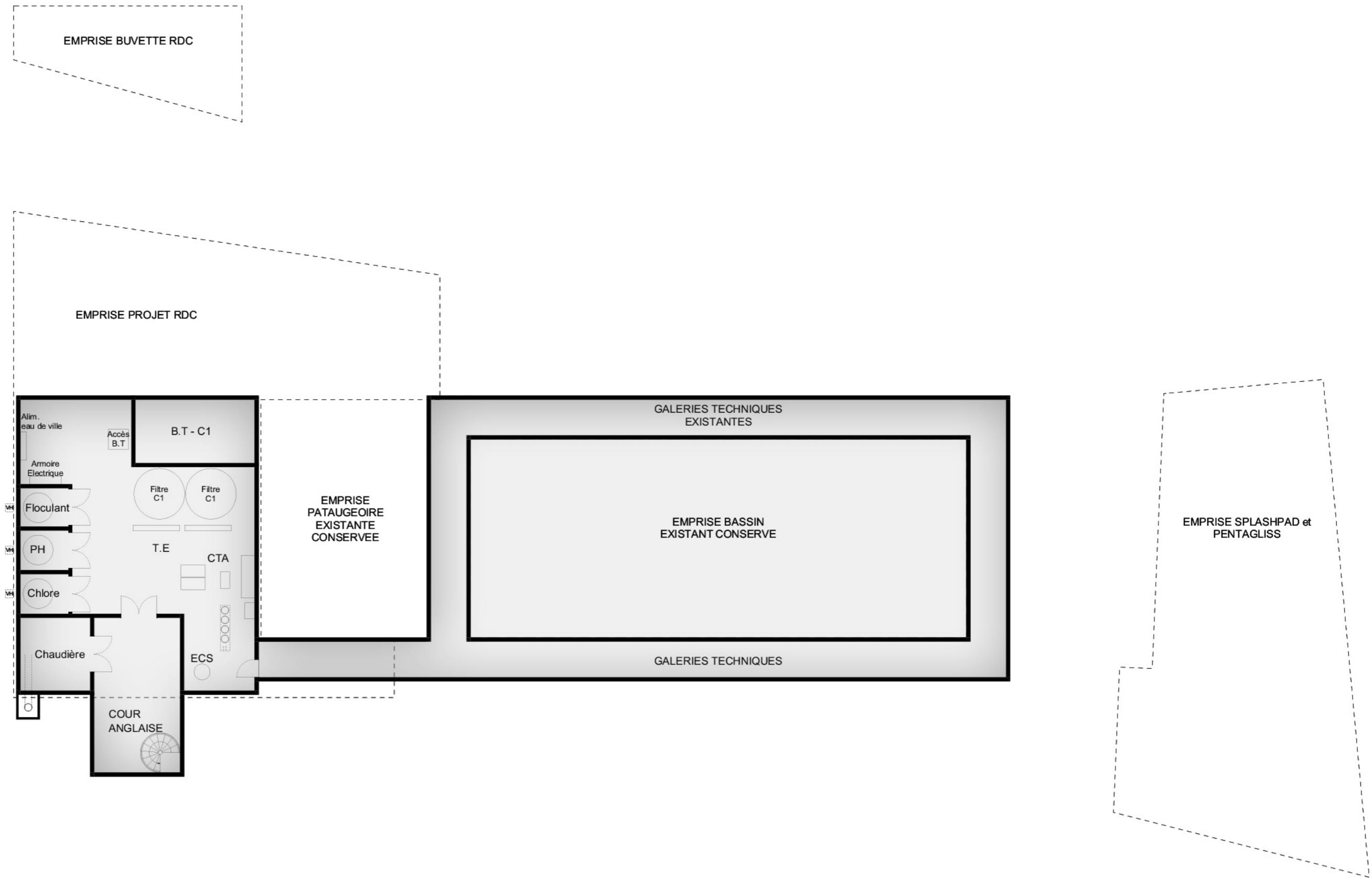
A VERNOU-LA-CELLE-SUR-SEINE

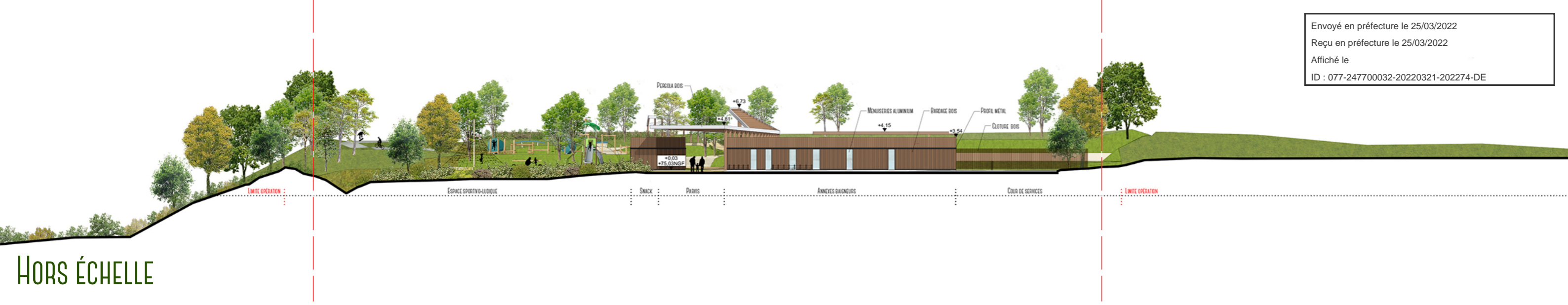




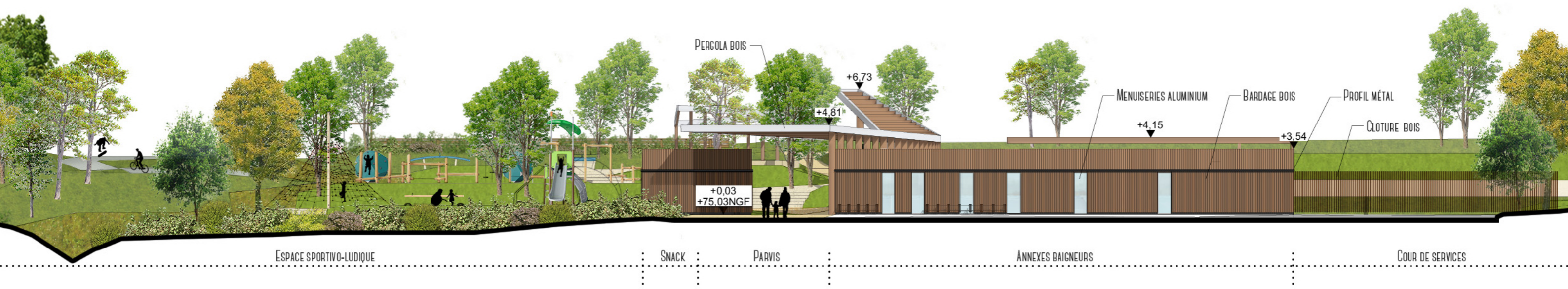


Envoyé en préfecture le 25/03/2022
 Reçu en préfecture le 25/03/2022
 Affiché le _____
 ID : 077-247700032-20220321-202274-DE

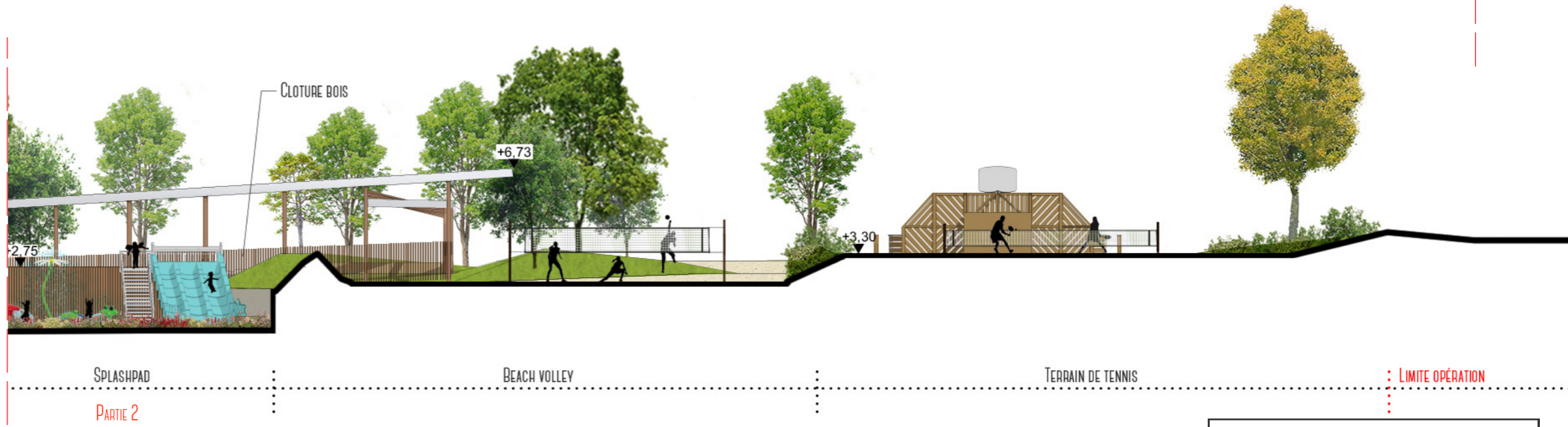
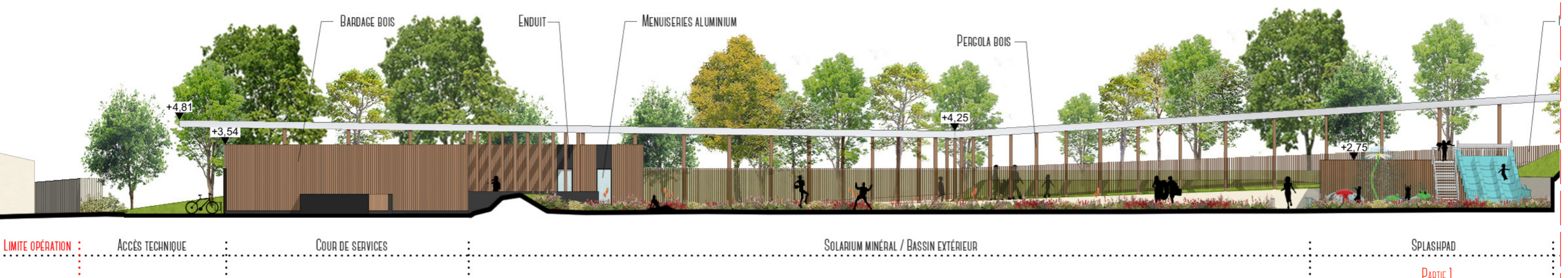
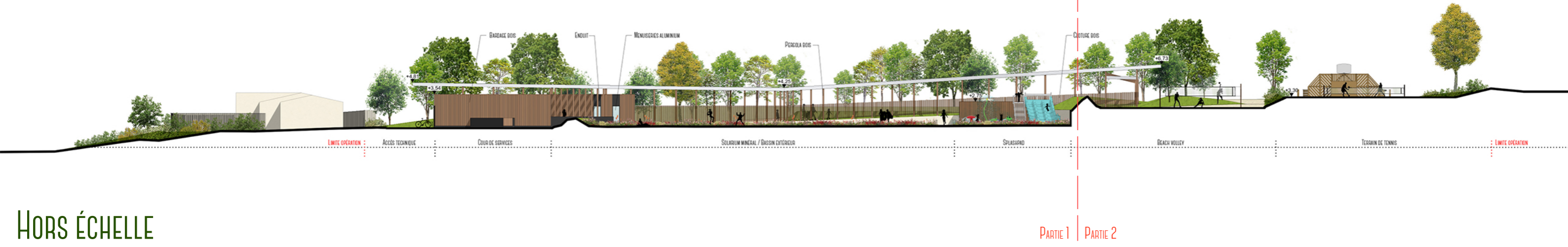




HORS ÉCHELLE

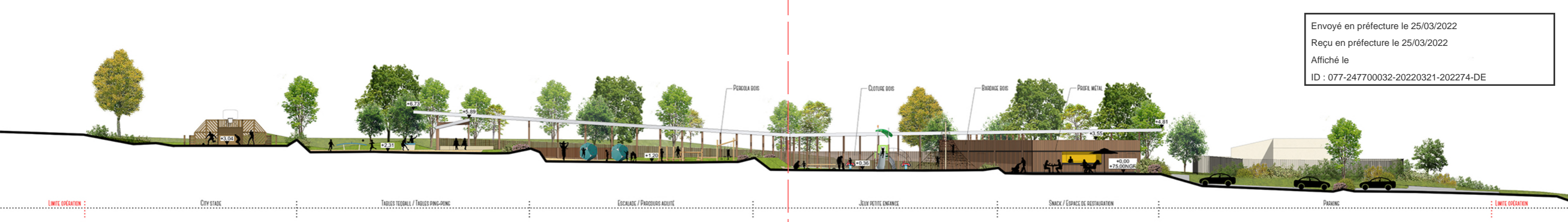


HORS ÉCHELLE



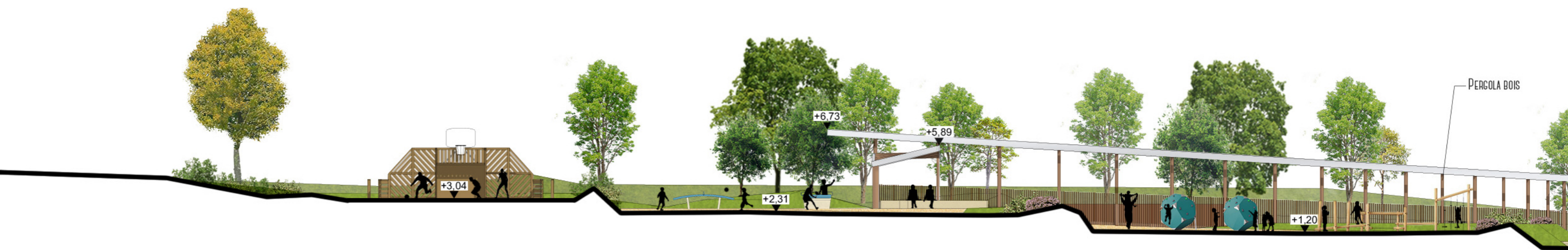
Envoyé en préfecture le 25/03/2022
Reçu en préfecture le 25/03/2022
Affiché le
ID : 077-247700032-20220321-202274-DE

FAÇADE SUD-EST - ZONE AQUALUDIQUE - ECH. 1/200

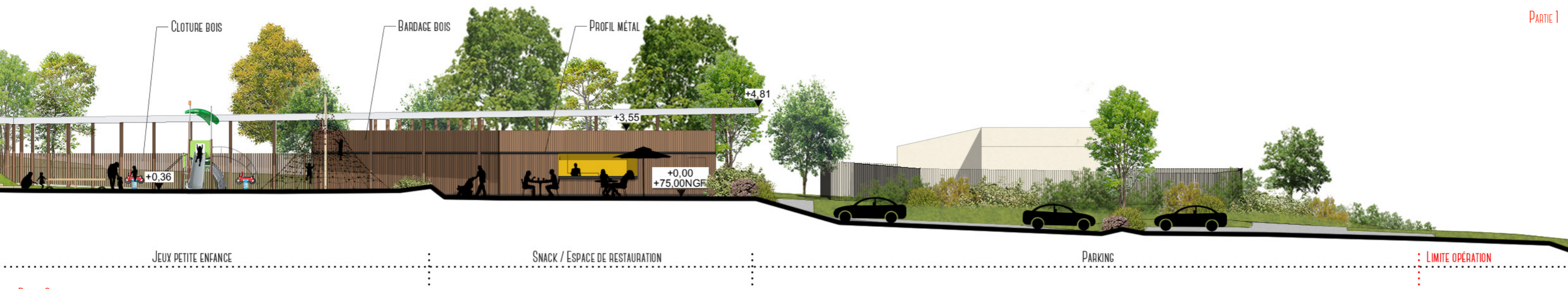


HORS ÉCHELLE

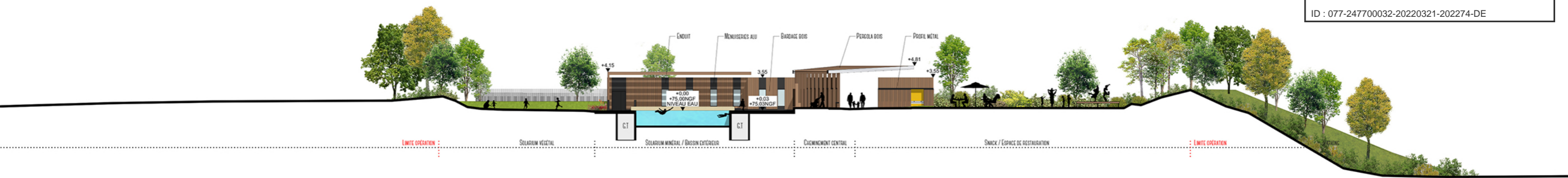
PARTIE 1 | PARTIE 2



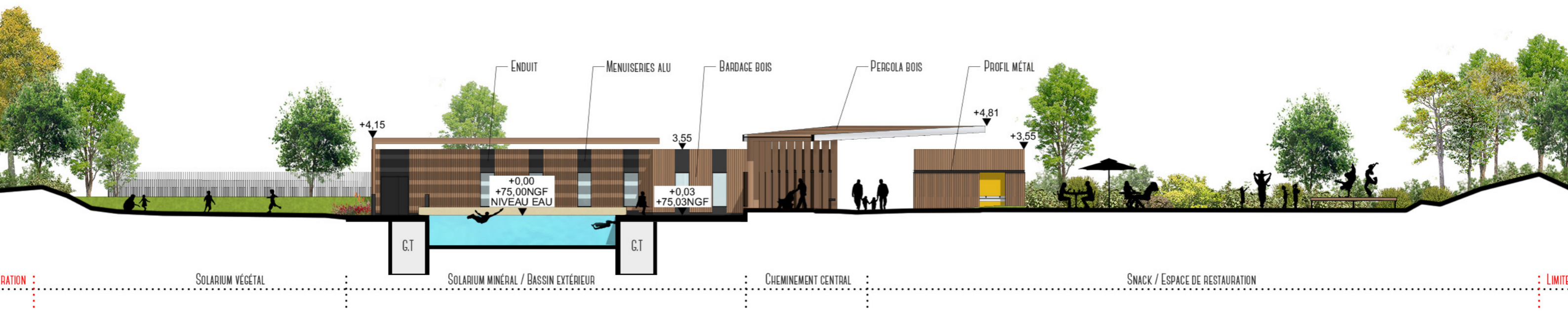
PARTIE 1



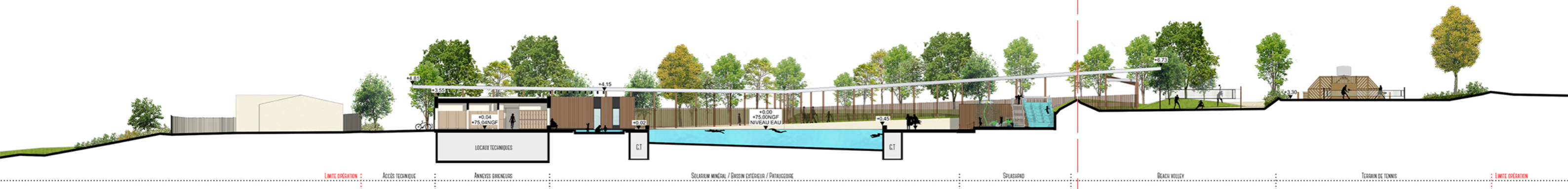
PARTIE 2



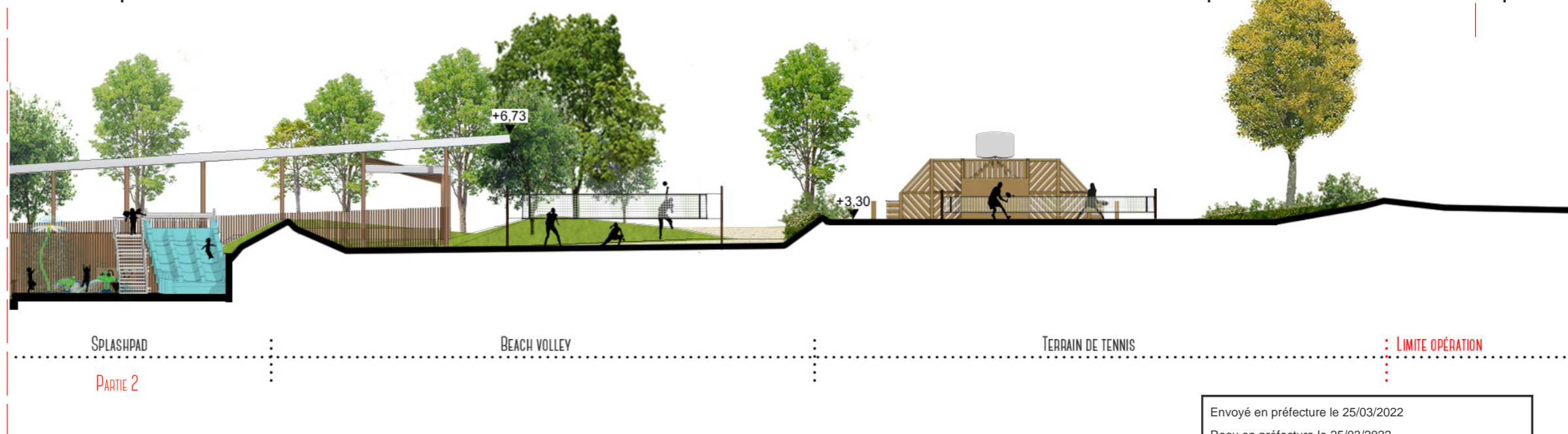
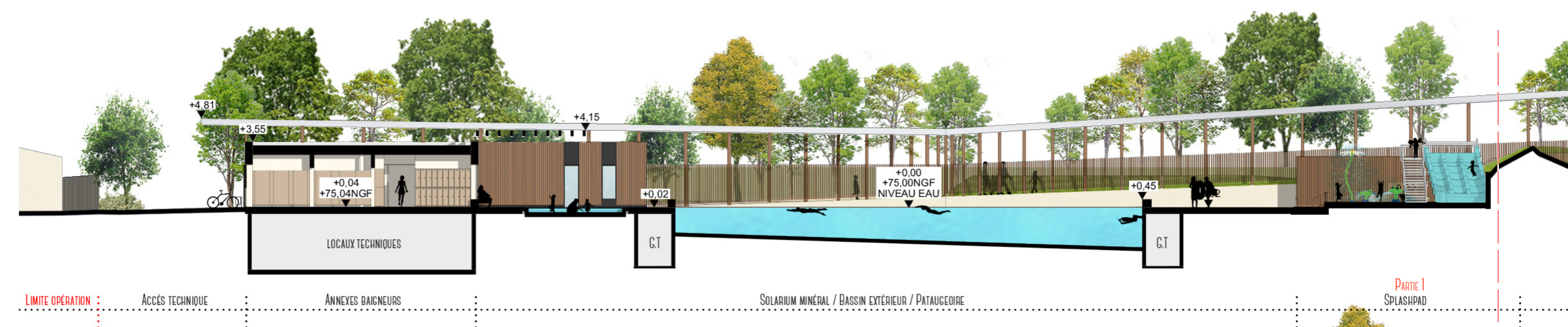
HORS ÉCHELLE



HORS ÉCHELLE



PARTIE 1 | PARTIE 2



Envoyé en préfecture le 25/03/2022
Reçu en préfecture le 25/03/2022
Affiché le
ID : 077-247700032-20220321-202274-DE

COUPE A LONGITUDINALE - Ech. 1/200



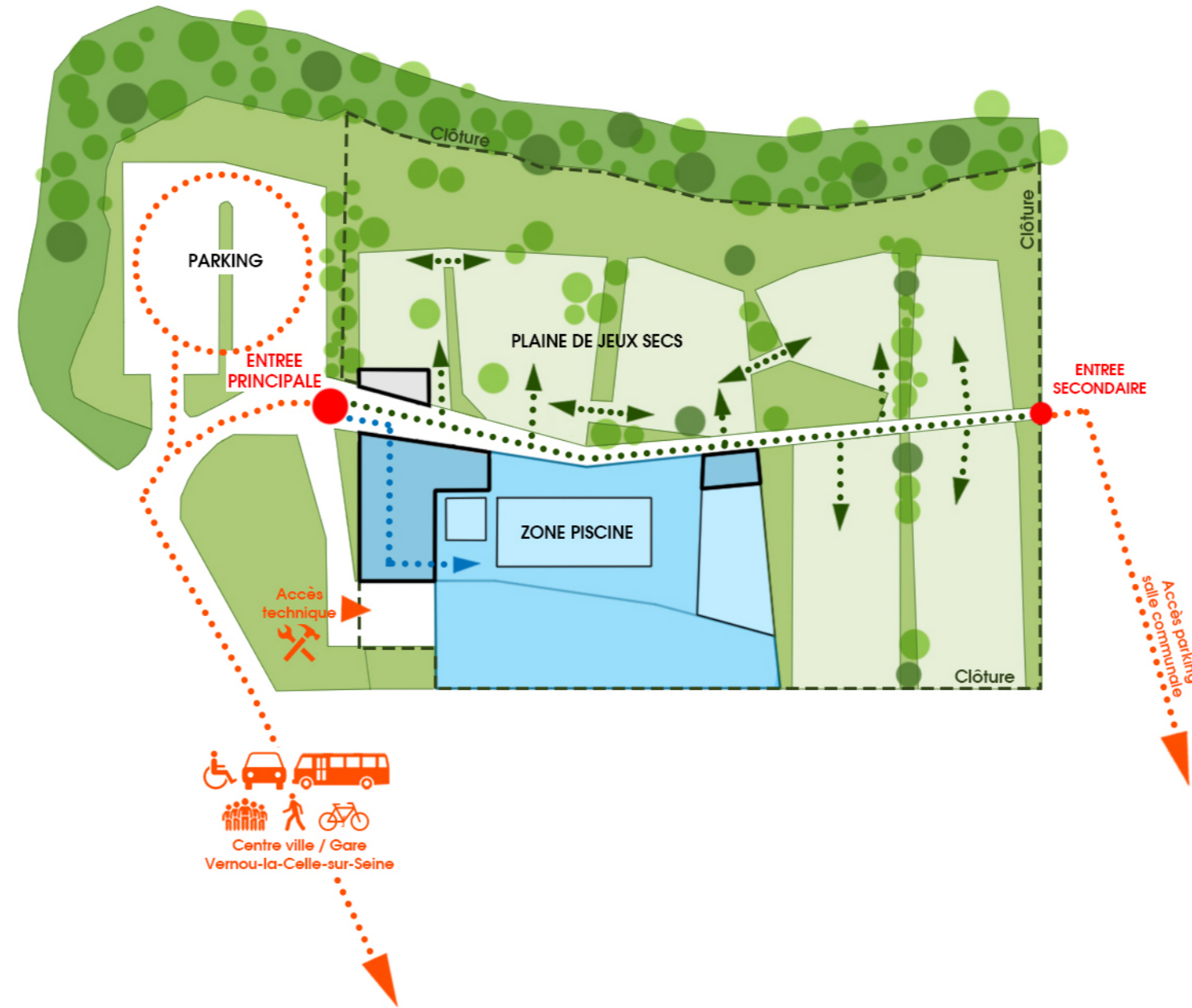


PERSPECTIVE ESPACES EXTÉRIEURS: ZONE SÈCHE



LÉGENDE

- FLUX D'ACCÈS AU SITE
- FLUX ZONE HUMIDE
- FLUX ZONE SÈCHE
- ● ACCÈS



Envoyé en préfecture le 25/03/2022
Reçu en préfecture le 25/03/2022
Affiché le
ID : 077-247700032-20220321-202274-DE

SCHÉMA DES FLUX DE CIRCULATIONS EXTERNES (AMÉNAGEMENT PAYSAGER ET CHEMINEMENTS DES DIFFÉRENTS PUBLICS)